

The Emergency Aid Network (EA Net)

Monique Lee Whitley
Academic Planning and Policy
September 10, 2018



60x30TX



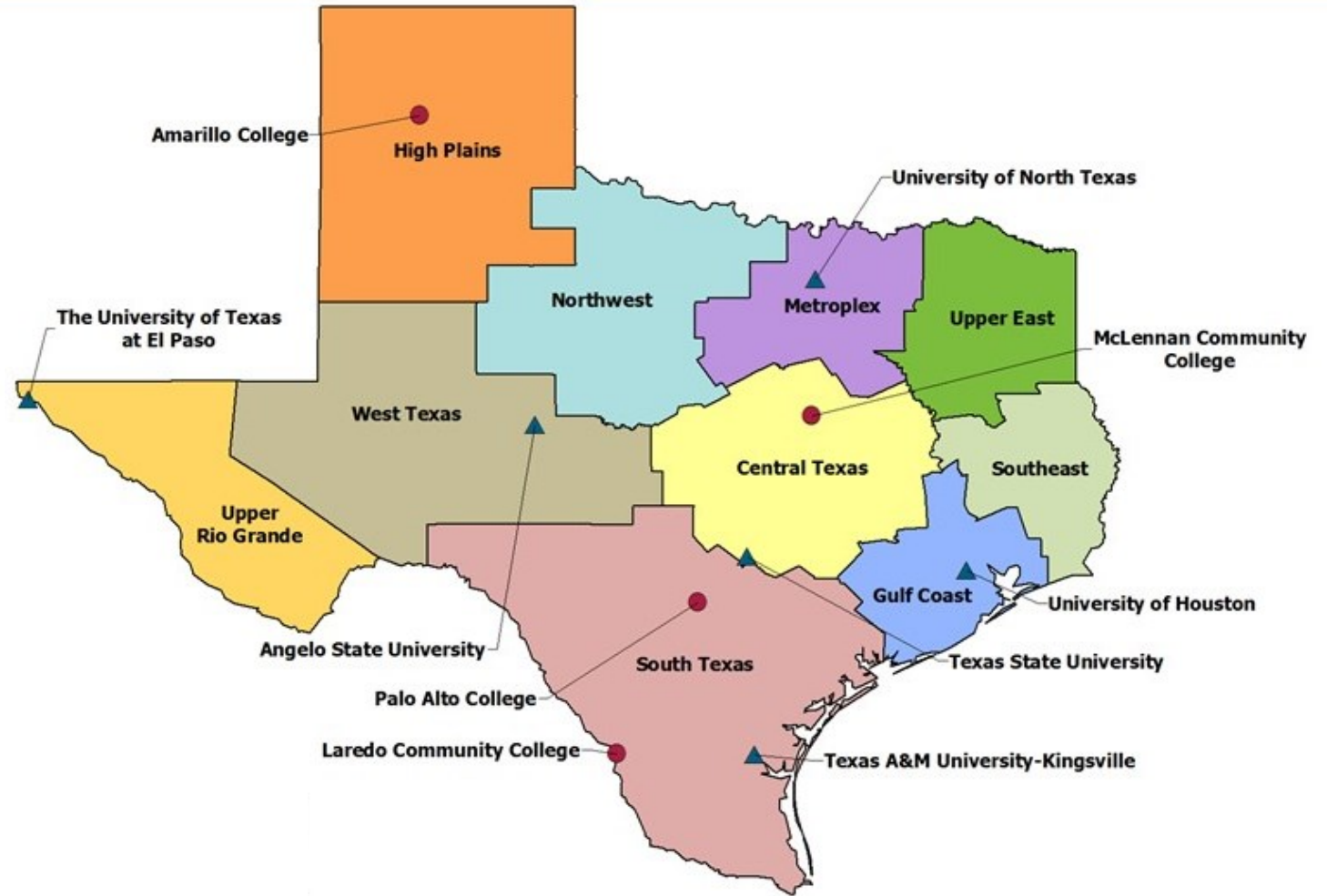
Texas Higher Education
Coordinating Board

Who, What, Where...



Who is in the EA Net?

- 10 IHEs across Texas
- 7 Systems
- 42 Active Members
- EA Net Partners

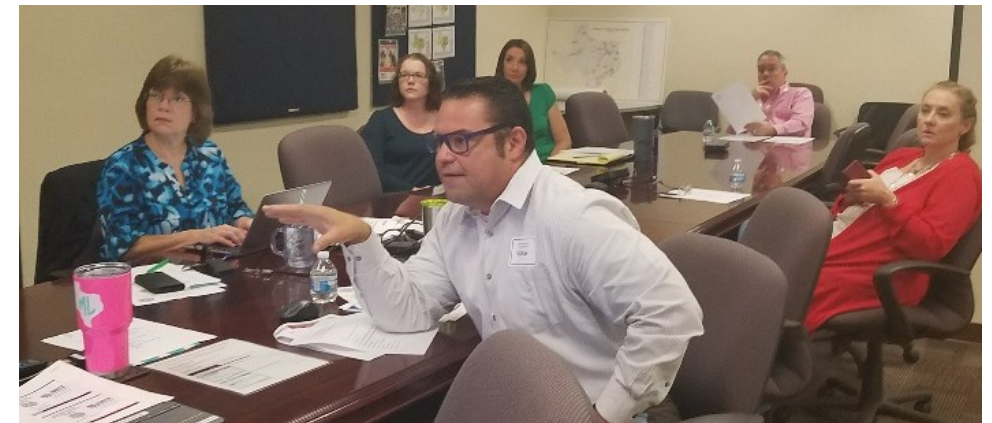
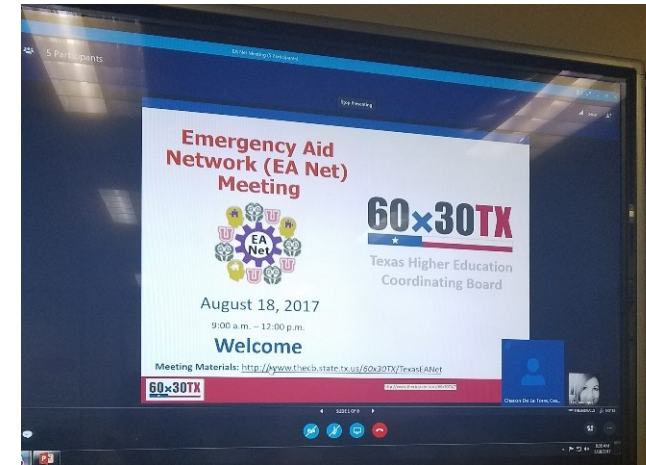


What did the EA Net do?

"... there is growing evidence of the need for emergency aid, and research indicates such programs can make a difference."

– Brad Hershbein, W.E.Upjohn Institute

The Emergency Aid Network (EA Net)



1. Define “Emergency”

“Institutions need to be careful of being too restrictive so as to be able to help students in need.

Best practice: Take care of the financial emergency first and then refer the student to other resources”

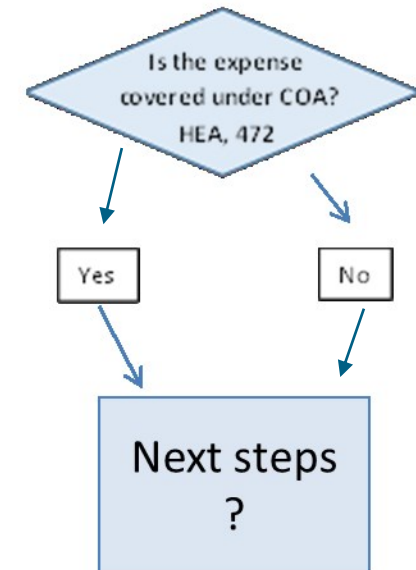
– Ben Dobner, Great Lakes Higher Education Guaranty Corp.

Policies?

The institution's definition of "emergency" determines if it's a true emergency or a financial aid issue...



Student self-identifies as needing EA



2. Simplify Administration

"Besides securing resources, Emergency Aid programs need a common language, compliance guidance, set of procedures, use of data and automated processing."

– Omari Burnside, NASPA

3. Diversify Communication

"IHEs should consider distinct ways that they can coordinate their responses across multiple channels, and always compose highly readable messages... Stress is also a factor for 'readability', as it has been proven that individuals who experience stress and anxiety can't read as well."

– Zachary Taylor, Graduate Student, UT-Austin

4. Partner with Community

"It is often easy to secure funding for emergency aid programs because success can be determined quickly; that is, the student either stays in college and returns the following semester or does not."

– Ben Dobner, Great Lakes Higher Education Guaranty Corp.

"Don't be afraid to try new things. Emergency aid will be most effective if it is paired with other services."

– Sara Goldrick-Rab, Temple University & Wisconsin Hope Lab

5. Automate Technology

"Given scarce resources, using technology and implementing it will be imperative. To move students forward, there should be an expectation that technology must play a role."

– Dr. Douglas Wilson, Southern Methodist University

"A conversational artificial intelligence system makes it easy for students to ask for help when they need it, rather than using avoidance and hoping the problem will go away."

– Kirk Daulerio, AdmitHub

6. Create Culture of Caring

"If we can remove some of life's barriers (which often don't include academic issues), the students can become more successful in school... The true driver is not the initiative itself, but love for the students."

– Dr. Russell Lowery-Hart, President, Amarillo College

"The strongest predictor of persistence is the student's social/emotional connection to the institution."

– Brad Hershbein, W.E.Upjohn Institute

EA Net Subgroups

Best Practices:	Community Partnerships:
Communication	Room & Board
Administration	Transportation
Sustainability	Health Care
Automated Technology	Technology

Where is the EA Net is headed in the near future?

- Championing Best Practices
- Community Partnerships
- Collaborations for Learning

